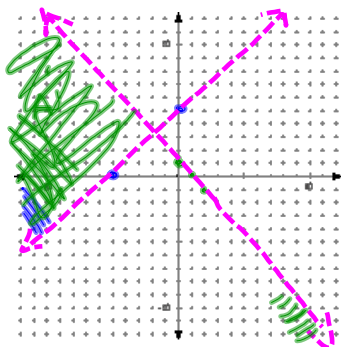


### 3-3 Graphing a System of Linear Inequalities

ex 1:

$$\begin{aligned} y &> x + 5 \\ y &< -x + 1 \end{aligned}$$



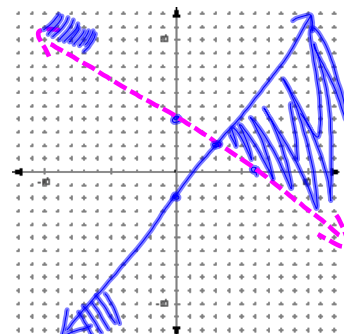
Nov 3-7:12 AM

ex 2:

$$2x + 3y > 12$$

$$-3y \geq 6 - 4x$$

$$y \leq -2 + \frac{4}{3}x$$

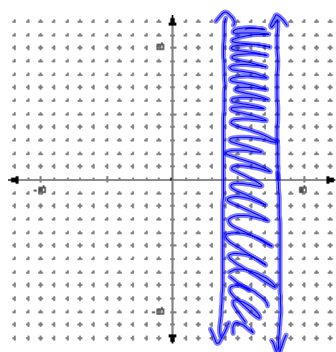


Nov 3-7:12 AM

ex 3:

$$4 \leq x \leq 8$$

$$\begin{cases} x \geq 4 \\ x \leq 8 \end{cases}$$



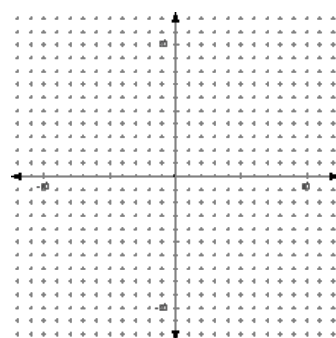
Nov 3-7:12 AM

Do:

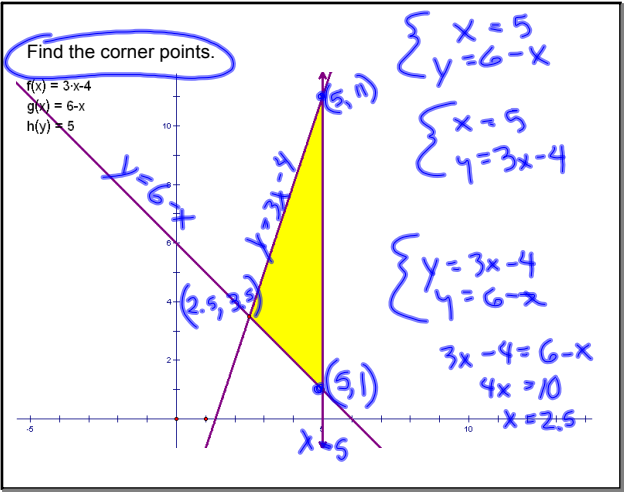
$$y \leq 3x - 4$$

$$y \geq 6 - x$$

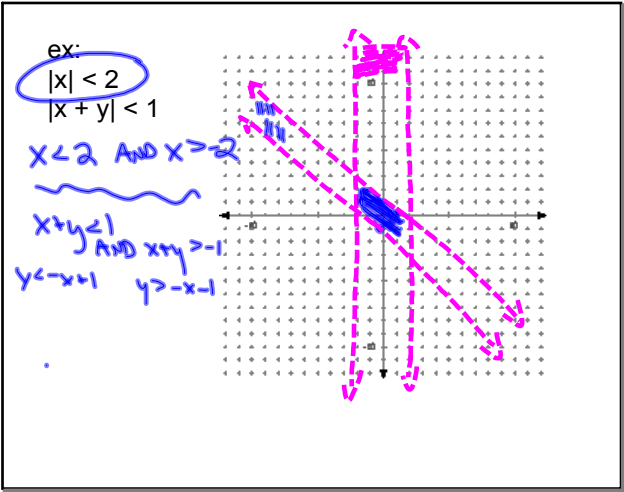
$$x \leq 5$$



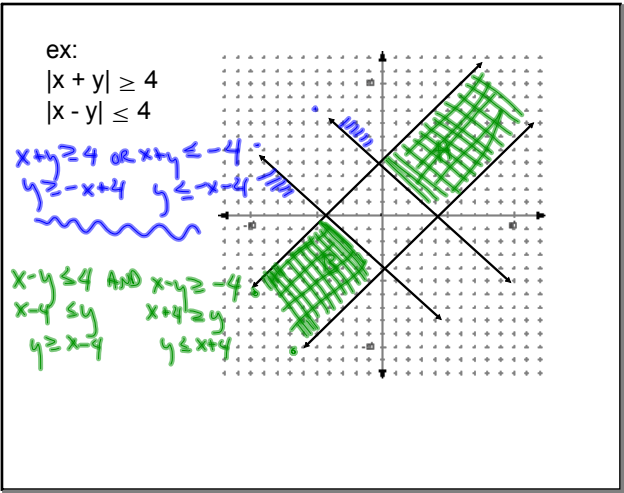
Nov 3-7:12 AM



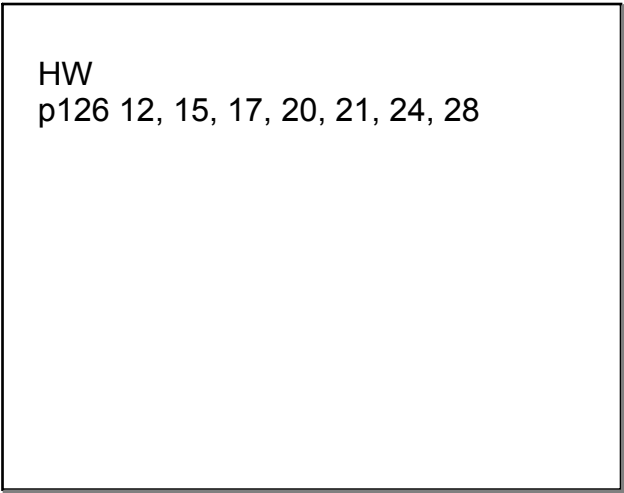
Nov 3-7:14 AM



Nov 3-7:20 AM



Nov 3-7:20 AM



Nov 3-7:22 AM